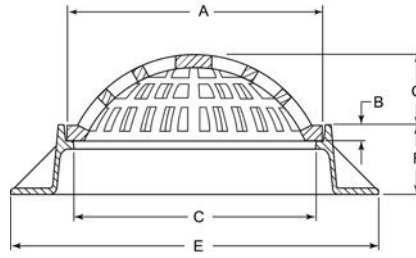


■ Note: When specifying/ordering grates, refer to "Choosing the Proper Inlet Grate" on pages 125-126.
 For a complete listing of FREE OPEN AREAS and WEIR PERIMETERS of all NEENAH grates, refer to pages 327-332.

R-2560 Series Inlet Frame, Beehive Grate

Suitable for drainage in circumstances where clogging of a flat grating is a problem. Excellent for roadside or earth ditch inlets.



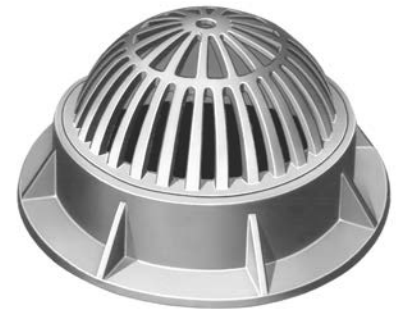
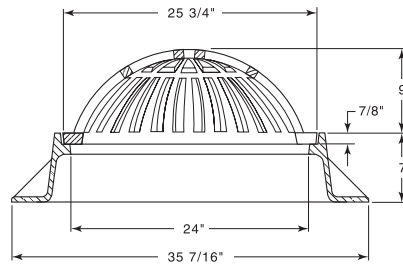
Illustrating R-2560-E

CATALOG NUMBER	GRATE TYPE	SQ. FT. OPEN	WEIR PERIMETER LINEAL FEET
R-2560-A	Beehive	0.3	3.1
R-2560-C	Beehive	0.7	4.7
R-2560-C1	Beehive	0.7	5.8
R-2560-C2	Beehive	0.7	5.8
R-2560-D	Beehive	1.0	5.1
R-2560-D1	Beehive	1.2	5.8
R-2560-D2	Beehive	1.2	5.8
R-2560-D3	Beehive	1.2	5.8
R-2560-D5	Beehive	1.0	5.1
R-2560-D6	Beehive	1.0	5.1
R-2560-D7	Beehive	1.3	5.3
R-2560-D8	Beehive	1.3	5.3
R-2560-E	Beehive	1.2	6.0
R-2560-EA	Beehive	1.2	6.7
R-2560-EB	Beehive	1.8	6.7
R-2560-E1	Beehive	1.4	6.7
R-2560-E2	Beehive	2.0	6.7
R-2560-E5	Beehive	1.2	6.7
R-2560-E6	Beehive	1.8	6.7
R-2560-E7	Beehive	1.2	6.7
R-2560-E8	Beehive	1.8	6.7
R-2560-E9	Beehive	1.2	6.7
R-2560-E10	Beehive	1.8	6.7
R-2560-G	Beehive	1.5	8.4

Catalog No.	Dimensions in inches						Frame/Lid
	A	B	C	E	F	G	
R-2560-A	12	1	11	19	4	3 1/4	R-1791-A
R-2560-C	18 1/4	1 1/4	16 3/4	30	8	4	R-1900-A
R-2560-C1	22	1 1/2	20 15/32	27 9/16	3 15/16	4 1/2	R-1690
R-2560-C2	22	1 1/2	20 1/2	28 1/4	6	4 1/2	R-1761
R-2560-D	22	1 1/2	20	35	9	4 1/2	R-1710
R-2560-D1	22	1 1/2	20 15/32	27 9/16	3 15/16	7	R-1690
R-2560-D2	22	1 1/2	20 1/2	28 1/4	6	7	R-1761
R-2560-D3	22	1 1/2	20	35	9	7	R-1710
R-2560-D5	22 3/4	1 1/2	21 1/4	34	4	4 1/2	R-1647-A
R-2560-D6	22 3/4	1 1/2	21	34	9	4 1/2	R-1713
R-2560-D7	22 3/4	1 1/2	21 1/4	34	4	7	R-1647-A
R-2560-D8	22 3/4	1 1/2	21	34	9	7	R-1713
R-2560-E	23	1 1/2	21 1/16	35 7/16	8 7/8	7	R-1550-A
R-2560-E1	25 3/4	7/8	24	35 7/16	7	6	R-1733
R-2560-E2	25 3/4	7/8	24	35 7/16	7	9	R-1733
R-2560-E5	25 3/4	7/8	24 1/8	35 1/2	8	6	R-1733-A
R-2560-E6	25 3/4	7/8	24 1/8	35 1/2	8	9	R-1733-A
R-2560-E7	25 3/4	7/8	24 1/8	35 1/2	9	6	R-1733-B
R-2560-E8	25 3/4	7/8	24 1/8	35 1/2	9	9	R-1733-B
R-2560-E9	25 3/4	7/8	24 1/8	35 1/2	10	6	R-1733-C
R-2560-E10	25 3/4	7/8	24 1/8	35 1/2	10	9	R-1733-C
R-2560-EA	25 3/4	7/8	24 1/8	35 7/16	4	6	R-1733-1
R-2560-EB	25 3/4	7/8	24 1/8	35 7/16	4	9	R-1733-1
R-2560-G	32	1 1/2	30	46	7	4	R-1740-B

R-2561 Inlet Frame, Beehive Grate

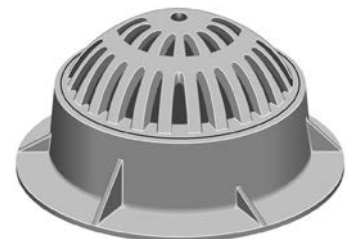
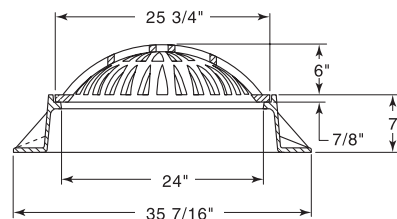
CATALOG NUMBER	GRATE TYPE	SQ. FT. OPEN	WEIR PERIMETER LINEAL FEET
R-2561	Beehive	2.0	6.7



Available Lid: R-1733

R-2561-A Inlet Frame, Beehive Grate

CATALOG NUMBER	GRATE TYPE	SQ. FT. OPEN	WEIR PERIMETER LINEAL FEET
R-2561-A	Beehive	1.2	6.7



Available Lid: R-1733

Supplied By:



877-903-7246

www.trenchdrainsupply.com

CLICK HERE to return to the Table of Contents